



KIDS CATCH!

For guppies 10 years and younger

BE SMART! EAT FISH! ACCORDING TO THE AMA, OMEGA 3 OILS FOUND IN FISH PLAY A CRUCIAL ROLE IN BRAIN FUNCTION AND CHILDREN'S BRAIN DEVELOPMENT.

A HEALTHY KIDS MENU { \$7 }

Bluewater strives to make the healthy option the easy choice. All items are served with carrot sticks and fruit. If you prefer any item fried, we use panko—a Japanese breadcrumb that absorbs very little oil! Choose an entrée, side and beverage below:

GRILLED DIPPING STICKS*

Choose one:
Fish; Shrimp; Chicken;
Steak; Salmon.

Includes Ranch dressing for dipping.

BURGER PATTY (NO BUN)* OR CHEESEBURGER SLIDER

PASTA WITH TOMATO SAUCE OR BUTTER & ROMANO CHEESE

GRILLED CHEESE SANDWICH

CHOOSE ONE SIDE

Garden salad,* fresh veggies,* edamame,* rice,* scalloped potato or french fries.

CHOOSE ONE BEVERAGE

Fruit juice (apple, cranberry, orange, pineapple) or low-fat milk.

SHARK ATTACK { \$3 }

Plunge into this blueberry soda as gummy sharks circle waiting for you to feed them shark bait—red POM juice!

COKE FLOAT { \$5 }

Old fashioned coke with a scoop of vanilla ice cream on top!

DESSERTS { \$2 }

CUP OF DIRT WITH WORMS

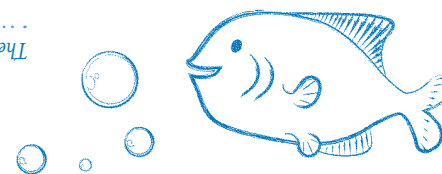
Vanilla ice cream, Oreo cookie crumbles and Gummi worms!

ICE CREAM SUNDAE

Vanilla ice cream, chocolate syrup, whipped cream and a cherry!

Q: What is the state fish of California?

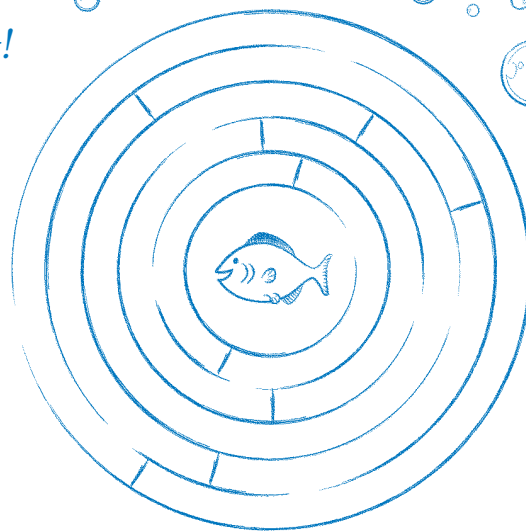
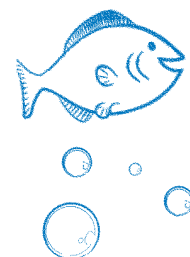
The Garibaldi fish!



DID YOU KNOW?

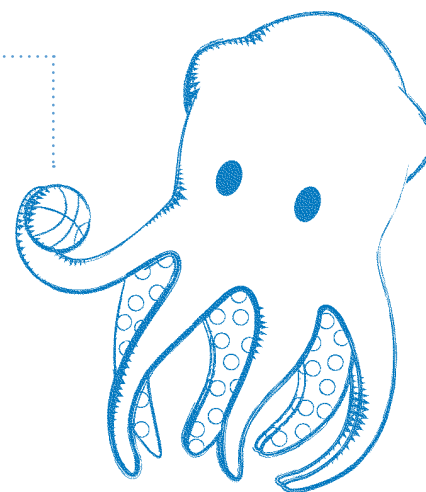
Salmon travel many miles to lay their eggs in the exact spot they were born!

Sammi the Salmon is lost! Can you help find her way back home?



DID YOU KNOW?

A giant squid can have eyeballs as big as a basketball!



Class flippers!



Q: What did Cinderella wear when she went swimming in the ocean?

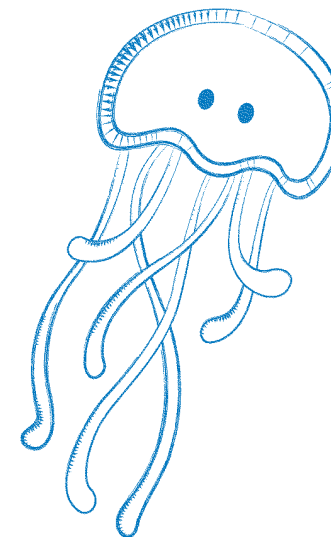
DID YOU KNOW?

The difference between a sea lion and a seal is that sea lions have ears!



Q: Which fish goes best with peanut butter?

Jellyfish!



Find all the items!

O	L	E	E	A	E	S
D	C	E	L	A	H	W
B	A	T	R	A	Y	K
S	T	S	O	W	S	R
L	F	O	U	P	Q	A
A	I	Y	G	Y	U	H
E	S	R	H	U	I	S
S	H	F	Y	M	D	O

- BATRAY
- CATFISH
- EEL
- FRY
- OCTOPUS
- ROUGHY
- SEA
- SEAL
- SHARK
- SQUID
- WHALE

DID YOU KNOW?

If a crab loses a claw, it can grow the claw back!